

NO.	DESCRIPTION	CODE	EQUIPMENT SCHEDULE	MANUFACTURER	WATER H.W.	WATER C.W.	DRAIN	COMMENTS
01	DRAFT BEER COOLER	DBR0	KROWNE METAL				1/2"	
02	REFRIGERATED BACK BAR CABINET	BS108	KROWNE METAL				1" IPS	
03	NOT USED							
04	THREE COMPARTMENT UNDERBAR SINK WITH 12" SIDE DRAINBOARDS	18-3C3	KROWNE METAL		1/2" IPS	1/2" IPS	1" IPS	
05	RECTANGULAR BAR TRASH CAN							
06	UNDERBAR SINK UNIT - ROYAL 1800 SERIES MIXOLOGY STATION	KR18-MS8	KROWNE METAL		1/2"	1/2" IPS FOR GLASS RINSE 1/2" IPS FOR DIPPER WELL	1" IPS	
07	UNDER BAR LIQUOR BOTTLE DISPLAY - ROYAL 1800 SERIES LIQUOR DISPLAY	KR18-ML8	KROWNE METAL					
08	ELIXIR MIXOLOGY MULTISTATION WITH CENTER ICE BIN - ROYAL 1800 SERIES	KR18-MS40C-10	KROWNE METAL				1" NPS DRAIN ELIXIR STATION 1" IPS DRAIN ICE BIN 1/2" IPS ICE BIN COLD PLATE	
09	UNDER BAR LIQUOR BOTTLE DISPLAY - ROYAL 1800 SERIES LIQUOR DISPLAY	KR18-ML8	KROWNE METAL					
10	UNDERBAR SINK UNIT - ROYAL 1800 SERIES MIXOLOGY STATION	KR18-MC12	KROWNE METAL		1/2"	1/2"	1-1/2" IPS	
11	BAR GLASS RACK	KR18-GS83	KROWNE METAL					
12	HAND SINK WITH SPLASH GUARDS	KR18-12DST	KROWNE METAL		1/2"	1/2"	1" IPS	
13	UNDERBAR SINK UNIT - ROYAL 1800 SERIES MIXOLOGY STATION	KR18-MS8	KROWNE METAL		1/2"	1/2" IPS FOR GLASS RINSE 1/2" IPS FOR DIPPER WELL	1" IPS	
14	UNDER BAR LIQUOR BOTTLE DISPLAY - ROYAL 1800 SERIES LIQUOR DISPLAY	KR18-ML8	KROWNE METAL					
15	ELIXIR MIXOLOGY MULTISTATION WITH CENTER ICE BIN - ROYAL 1800 SERIES	KR18-MS40C-10	KROWNE METAL				1" NPS DRAIN ELIXIR STATION 1" IPS DRAIN ICE BIN 1/2" IPS ICE BIN COLD PLATE	
16	UNDER BAR LIQUOR BOTTLE DISPLAY	KR18-ML8	KROWNE METAL					
17	RECTANGULAR TRASH CAN							
18	SPARKLING 24 DOUBLE CHAMPAGNE RACK	B240D	TORBOX					
19	PLAYER/20TRIS WINE RACK	P240T	TORBOX					
20	PLAYER/20TRIS WINE RACK	P240T	TORBOX					
21	WINE REFRIGERATOR	USP54S	ERODIB					
22	WINE REFRIGERATOR	USP54S	ERODIB					
23	WINE REFRIGERATOR	USP54S	ERODIB					
24	WINE REFRIGERATOR	USP54S	ERODIB					
25	WINE REFRIGERATOR	USP54S	ERODIB					
26	PAPER TOWEL DISPENSER	H-105	KROWNE METAL					
27	HAND SINK	HS-1	KROWNE METAL				1-1/2" IPS	PROVIDE STAINLESS STEEL SPLASH GUARDS.
28	SOAP DISPENSER	H-1130	ULINE					
29	SANDWICH TABLE	S29	ENTREE					
30	INSULATED UNDERCOUNTER HOT BOX	H-339-X-12-188C	CRES COR					
31	REFRIGERATED WORKTABLE	SW60N-D	CONTINENTAL REFRIGERATOR					
32	INSULATED UNDERCOUNTER HOT BOX	H-339-X-12-188C	CRES COR					
33	SANDWICH TABLE	S29	ENTREE					
34	PIZZA PAN RACK	PR10-3ST	ADVANCE TAPCO					
35	ROTISSERIE BBQ	M3 STANDARD	CAMINO PREFABRICATO PELLIGRINI					
36	PIZZA PAN RACK	PR10-3ST	ADVANCE TAPCO					
37	WORK TABLE WITH SINK AND UNDER, 63" X 30", WITH SPLASH GUARDS	600ST3096RT	REGENCY				1-1/2" IPS (VIF)	
38	SOAP DISPENSER	H-1130	ULINE					
39	PAPER TOWEL DISPENSER	H-105	KROWNE METAL					
40	STANDARD SERIES UNDERBAR DROP-IN ICE BINS	D2712	KROWNE METAL				1" IPS	
41	BUILT-IN DRAWER WARMERS	HDW-1B	HATCO					
42	ESPRESSO	AG420					7/8" FLEX LINE	
43	UNDERBAR REFRIGERATION	TBB-24-48-S-HC	TRUE					
44	BASE CABINET DISH STORAGE WITH DUPLICATE UNIT STACKED ABOVE	ST-324-48-S	UNIVERSAL					
45	HAND SINK	HS-1	KROWNE METAL				1-1/2" IPS	PROVIDE STAINLESS STEEL SPLASH GUARDS.
46	PAPER TOWEL DISPENSER	H-105	KROWNE METAL					
47	SOAP DISPENSER	H-1130	ULINE					
48	UNDERCOUNTER FREEZER	UF48-Q	ENTREE					
49	SANWICH TABLE	S48	ENTREE					
50	SANWICH TABLE	S29	ENTREE					
51	STAINLESS STEEL WORK TABLE	RSW T 3048	R.S.W.					
52	GRAVITY FEED SLICER	823E-PLUS	BERKEL					
53	STAINLESS STEEL WORK TABLE	ELAC-305	ADVANCE TABCO					
54	GRAVITY FEED SLICER	823A-PLUS	BERKEL					
55	MICROWAVE	180MW1000D	SOLWAYE					
56	SANWICH TABLE	S48	ENTREE					
57	SANWICH TABLE	S29	ENTREE					
58	UNDERCOUNTER FREEZER	SW60-U-D	HATCO					
59	HEAT LAMP		CONTINENTAL					
60	HEAT LAMP	SW60-U-D	HATCO					
61	UNDERCOUNTER REFRIGERATOR	S29	CONTINENTAL					
62	SANWICH TABLE	S29	ENTREE					
63	BLAST CHILLER	727692	ELECTROLUX					
64	60" OVEN		ELECTROLUX					
65	24" RANGE AND OVEN		VIKING RANGE CORPORATION					
66	EMPPOWER RESTAURANT RANGE	169135 (ACFG36T)	ELECTROLUX				1"	
67	PASTA COOKER						1"	
68	PASTA COOKER							
69	EMPPOWER RESTAURANT RANGE	169135 (ACFG36T)	ELECTROLUX					
70	DEEP FRYER	PF-45N	PANTIN					
71	DEEP FRYER	PF-45N	PANTIN					
72	HAND SINK WITH SPLASH GUARDS	HS-1	KROWNE METAL				1-1/2" IPS	PROVIDE STAINLESS STEEL SPLASH GUARDS.
73	PAPER TOWEL DISPENSER	H-105	KROWNE METAL					
74	SOAP DISPENSER	H-1130	ULINE					
75	THREE COMPARTMENT SINK		ADVANCE TAPCO					
76	HAND SINK	HS-1	KROWNE METAL				1-1/2" IPS	PROVIDE STAINLESS STEEL SPLASH GUARDS.
77	PAPER TOWEL DISPENSER	H-105	KROWNE METAL					
78	SOAP DISPENSER	H-1130	ULINE					
79	STRAIGHT SOLED DISHWASHER	LENGTH T.B.D.	ADVANCE TABCO				1-1/2" INDIRECT	
80	DISHWASHER WITH HOOD	504279	ELECTROLUX					
81	CLEAN STRAIGHT DISHWASHER	LENGTH T.B.D.	ADVANCE TABCO				1-1/2" DIRECT	
82	UNDERCOUNTER DISHWASHER	DTU J60-ARR	ADVANCE TABCO					
83	ECONOMY WALL MOUNTED SLANT RACK SHELVES	DT-62-EC-X	ADVANCE TABCO					
84	WAREWASHING UNDERCOUNTER DISHWASHER		ELECTROLUX		3/4"		3/4" DIRECT	
85	PAPER TOWEL DISPENSER	H-105	KROWNE METAL					
86	HAND SINK	HS-1	KROWNE METAL				1-1/2" IPS	PROVIDE STAINLESS STEEL SPLASH GUARDS.
87	SOAP DISPENSER	H-1130	ULINE					
88	SANDWICH TABLE	EPBR2	EVERETT					
89	WOOD TOP TABLE	H2G-304	ADVANCE TABCO					
90	PNUOVA PASTA MAKER		LA MONFERRINA					
91	MULTI-PASTA MAKER		LA MONFERRINA					
92	WOOD TOP TABLE WITH UNDERSHELF	H2G-305	ADVANCE TABCO					
93	WOOD TOP TABLE WITH UNDERSHELF	H2G-305	ADVANCE TABCO					
94	MICROWAVE	180MW1000D	SOLWAYE					
95	WOOD TOP TABLE WITH OPEN BASE	H2H2G-305	ADVANCE TABCO					
96	HEAT LAMP		HATCO					
97	COOKING	TM6	THE ROMIX					
98	WOOD TOP TABLE WITH OPEN BASE	H2H2G-244	ADVANCE TABCO					
99	MIXER COMMERCIAL SERIES 8-QUART BOWL LIFT STAND	KSMC8990	KITCHENAID					
100	HEAT LAMP		HATCO					
101	MIXER COMMERCIAL SERIES 8-QUART	KSMC895	KITCHENAID					
102	ICE CREAM MAKER	LB-1008	CARPIGIANI					
103	WOOD TOP TABLE WITH UNDERSHELF	H2G-364	ADVANCE TABCO					
104	FREE STANDING MIXER	50-40-01T	NESCOLATRICE PLANETARIA					
105	24" X 24" MOLDED STONE FLOOR MOP SINK WITH SPLASH GUARDS	MSBID2424	FIAT				3"	
106	ROYAL SERIES SERVICE FAUCET	KROWNE 16-127	FIAT					
107	TWO COMPARTMENT VEGETABLE SINK WITH DRAINBOARD	9-2-36-24R	ADVANCE TABCO					
108	WALKIN FREEZER	WIFB	AMERIKOOLER					
109	NSF CHROME WIRE SHELVING	460EC1848	REGENCY					
110	NSF CHROME WIRE SHELVING	460EC1848	REGENCY					
111	ICE MACHINE AND STORAGE BIN	CB851AC WITH KDB850	KOLD-DRAFT		3/4" FPT		3/4" FPT	
112	WALKIN COOLER	WIFB	AMERIKOOLER					
113	16 GAUGE WORK TABLE	SPECIAL ORDER 120" X 22"	REGENCY					
114	NSF CHROME WIRE SHELVING, 24" X 36" WITH 34" POSTS	460EC436K33	REGENCY					
115	NSF CHROME WIRE SHELVING, 24" X 36" WITH 34" POSTS	460EC436K33	REGENCY					
116	NSF CHROME WIRE SHELVING, 24" X 36" WITH 34" POSTS	460EC436K33	REGENCY					
117	NSF CHROME WIRE SHELVING, 24" X 36" WITH 34" POSTS	460EC436K33	REGENCY					
118	AIR CURTAIN	AP-2.42-1	AP AIR-PRO					
119	EMPLOYEE STORAGE LOCKERS, 16 STORAGE LOCKERS	WL-161CB	WINHOLT EQUIPMENT					
120	NSF CHROME WIRE SHELVING	460EC2460	REGENCY					
121	NSF CHROME WIRE SHELVING	460EC2460	REGENCY					
122	WINE REFRIGERATOR	USP54S	ERODIB					
123	WINE REFRIGERATOR	USP54S	ERODIB					
124	WINE REFRIGERATOR	USP54S	ERODIB					
125	WINE REFRIGERATOR	USP54S	ERODIB					
126	WINE REFRIGERATOR	USP54S	ERODIB					
127	SODA DISTRIBUTION BAG IN A BOX RACK	5014117	SERVEND					
128	GAS HOT WATER HEATER	D-100-196-AS	AMERICAN STANDARD					
129	HOOD EXHAUST FAN	BRN3C2AF445CC19	CASRE					
130	BUILT-IN DRAWER WARMERS	HDW-1B	HATCO					
131	STAINLESS STEEL MOP & BROOM HOLDER	B-273	BRIBBICK					
132	GELATO DIPPING CLEANING WELL	77316-7B-223	NEMCO FOOD EQUIPMENT					
133	HAND SINK WITH SPLASH GUARDS	HS-1	KROWNE METAL				1-1/2" IPS	
134	PAPER TOWEL DISPENSER	H-105	KROWNE METAL					
135	SOAP DISPENSER	H-1130	ULINE					

EQUIPMENT NOTES

ALL HAND SINKS ADJACENT TO A FOOD PREPARATION AREA SHALL BE EQUIPPED WITH STAINLESS STEEL SPLASH GUARDS.

ALL FOOD EQUIPMENT SHALL MEET THE NATIONAL SANITATION FOUNDATION (NSF) STANDARDS.

VERIFY ALL DIMENSIONS AND MODEL NUMBERS BEFORE ORDERING.

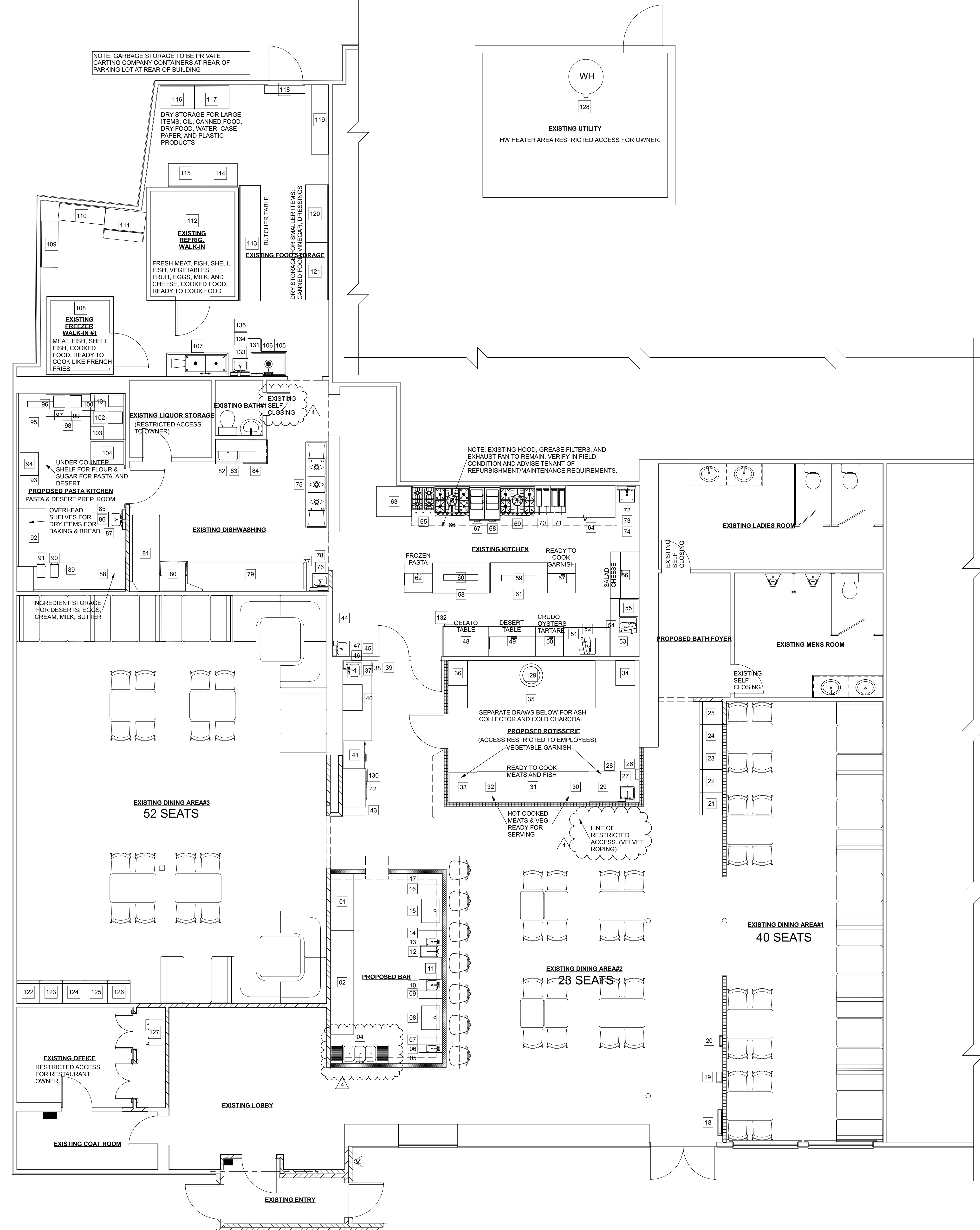
VERIFY ALL CLEAR DIMENSION FOR STAINLESS STEEL SHELVES BEFORE ORDERING.

ALL EQUIPMENT TO BE ORDERED SINGLE PHASE 120V OR 220V UNLESS OTHERWISE DIRECTED BY OWNER.

ALL EQUIPMENT TO BE U.L. APPROVED.

GENERAL CONTRACTOR IS RESPONSIBLE FOR ASSEMBLY AND CONNECTION OF ALL EQUIPMENT AS PER MANUFACTURERS SPECIFICATIONS.

GENERAL CONTRACTOR TO COORDINATE WITH OWNER, RESPONSIBILITY OF SUPPLYING ALL EQUIPMENT, FIXTURES, MILLWORK, MECHANICAL EQUIPMENT, SEATING, TABLES, PLUMBING FIXTURES, ETC.



EQUIPMENT PLAN
SCALE: 1/4" = 1'-0"

Copyright of Architectural Drawings- These plans are protected by federal law and are subject to copyright protection as an "architectural work" under section 102 of the copyright act, 17 U.S.A. as amended December 1990 and known as Architectural Works Copyright Protection Act of 1990. These drawings are provided as an instrument for construction for the construction project at the address shown on the title block of the drawings and they may not be used for any project other than that listed at the address shown on the title block without the written consent and compensation of the architect. This protection includes but is not limited to the overall form as well as the arrangement and composition of spaces and elements of the designs. Under such protection, unauthorized use of these plans, work or name represented, can legally result in the cessation of construction or buildings being seized and/or monetary compensation to Carmelhill Architects and/or Edward Koenig.

NO.	DESCRIPTION	DATE
1	DESIGN APPROVED.	11-21-19
2	ISSUED FOR HEALTH SUBMISSION.	12-19-19
3	REVISED PER HEALTH EXAMINER REVIEW AND REISSUE FOR PERMIT.	1-3-20
4	REVISED PER HEALTH EXAMINER PHONE CONVERSATION FOR FINAL APPROVAL.	1-9-20
5	SUBMITTED HEALTH APPROVALS TO TOWN WITH CONTRACTORS INSURANCES.	1-17-20
6	FINAL APPROVED SET ISSUED TO ELECTRICIAN AND PLUMBER.	1-28-20

CAD File Name: BRAGOLI REVISED 4 layout
Drawn By: Edward Koenig

Architect's Seal

CARMELHILL ARCHITECTS

www.CARMELHILL.COM

Architecture Firm:
CARMELHILL ARCHITECTS
EDWARD KOENIG - R.A., A.I.A.
415 LAKE AVENUE SOUTH
NESCONSET, NY 11767-1848
631-277-3337
Website: www.CARMELHILL.com
Email: CARMELHILL16@gmail.com

Project Title:
INTERIOR RENOVATION
OSTERIA UMBRA
197 TERRY ROAD
SMITHTOWN, NY 11787
631-780-6633
DISTRICT 800 - SECTION 134 - BLOCK 5 - LOT 24.001

Sheet Title:
EQUIPMENT PLAN

Drawing No.
A-8